

# ELISA WASHER, COATING MACHINE, BLOCKING MACHINE

FOR ELISA KIT LARGE SCALE MANUFACTURING EQUIPMENT

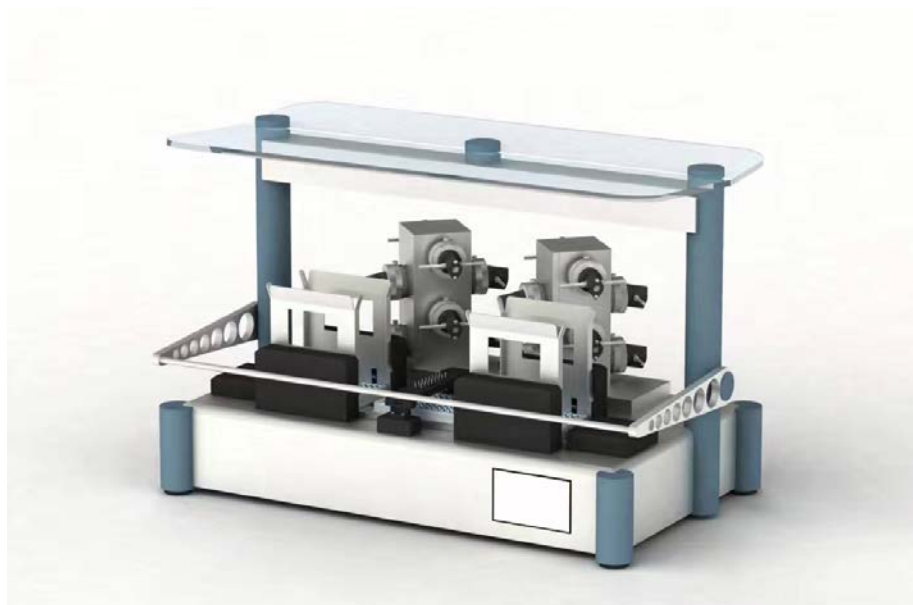
Cat. No. ARE2608



EQUIPMENT MAKE:  
High Accuracy 8 Channel filling  
MODEL: ARE2608/ARE2608F  
YEAR: 2017

Parameter	
Product	Coating machine
Operating system	OMRON electronic control, stable and reliable, 7 inch touch LCD screen
Features	Adopt American FMI high-precision pump, no splash liquid, no bubble, each channel can be adjusted individually for different liquid and different volume
Filling method	Clean injection mode, safer and more convenient
Plate feeder	Stacker
Monitoring system	OMRON diffuse inverse detection, can identify various materials microplate, stable and reliable
Plate type	96 well plate
Memory	Current run records, historical run records
Material	High anti-corrosion 316 stainless steel, neat, wear-resistant, easy to clean
Pump filling volume	10-400ul (adjustable), interval 0.2ul
Filling precision	Tolerance $\pm 1\%$ , repeat precision $< 0.5\%$
Filling Strips	1~12 types
Capacity	500 plates/hour
Customization	16, 24, 32, 48, 96, 120 pumps

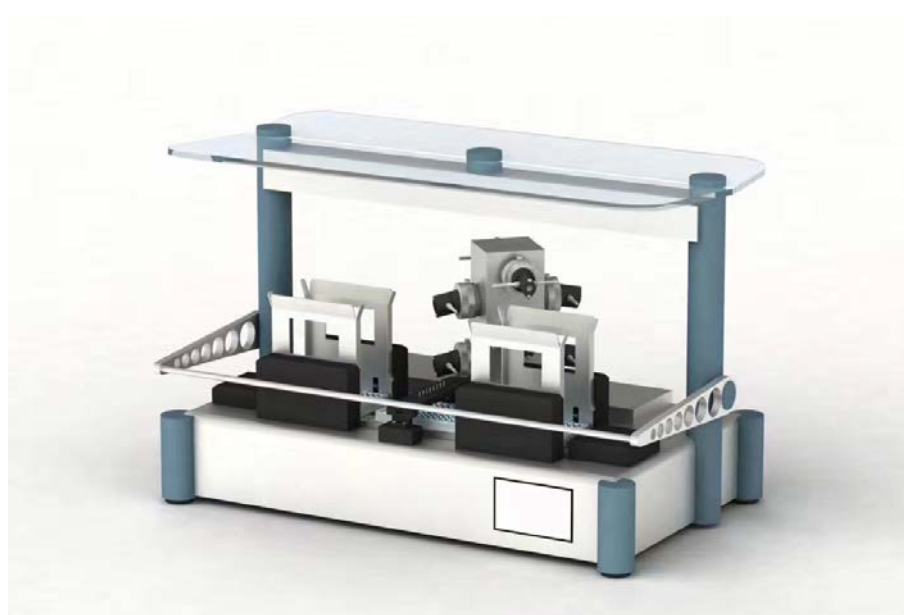
Cat. No. ARE26216



EQUIPMENT MAKE:  
High Accuracy 16 Channel filling  
MODEL: ARE26216  
YEAR: 2017

Parameter	
Product	Coating machine
Operating system	OMRON electronic control, stable and reliable, 7 inch touch LCD screen
Features	Adopt American FMI high-precision pump, no splash liquid, no bubble, each channel can be adjusted individually for different liquid and different volume
Filling method	Clean injection mode, safer and more convenient
Plate feeder	Stacker
Monitoring system	OMRON diffuse inverse detection, can identify various materials microplate, stable and reliable
Plate type	96 well plate
Memory	Current run records, historical run records
Material	High anti-corrosion 316 stainless steel, neat, wear-resistant, easy to clean
Pump filling volume	10-400ul (adjustable), interval 0.2ul
Filling precision	Tolerance $\pm 1\%$ , repeat precision $< 0.5\%$
Capacity	300 plates/hour

**Cat. No. ARE26208**



EQUIPMENT MANE:  
High Accuracy 8 Channel filling  
MODEL:ARE26208  
YEAR:2017

Parameter	
Product	Coating machine
Operating system	OMRON electronic control, stable and reliable, 7 inch touch LCD screen
Features	Adopt American FMI high-precision pump, no splash liquid, no bubble, each channel can be adjusted individually for different liquid and different volume
Filling method	Clean injection mode, safer and more convenient
Plate feeder	Stacker
Monitoring system	OMRON diffuse inverse detection, can identify various materials microplate, stable and reliable
Plate type	96 well plate
Memory	Current run records, historical run records
Material	High anti-corrosion 316 stainless steel, neat, wear-resistant, easy to clean
Pump filling volume	10-400ul (adjustable), interval 0.2ul
Filling precision	Tolerance $\pm 1\%$ , repeat precision $<0.5\%$
Capacity	200 plates/hour

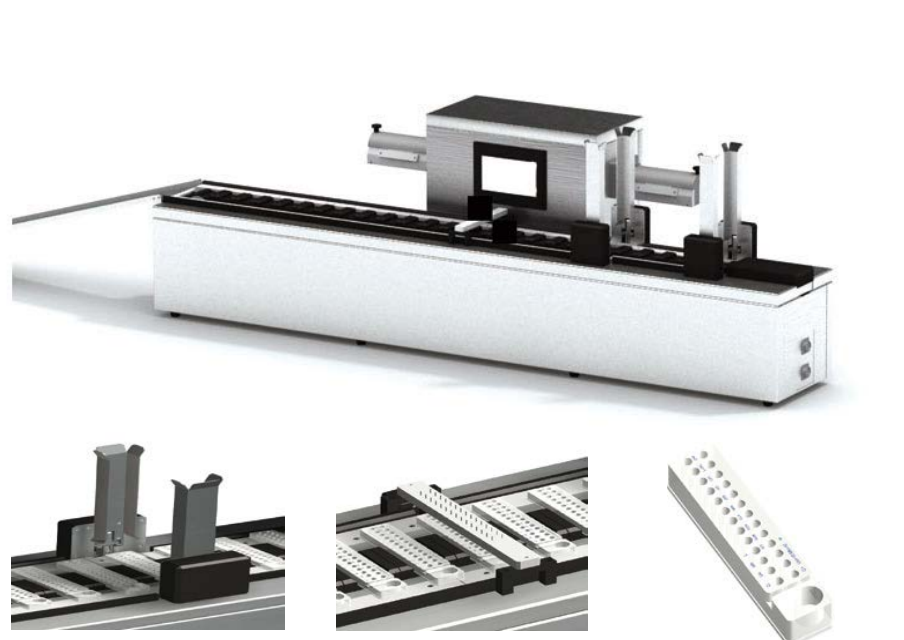
**Cat. No. ARE26108**



EQUIPMENT MANE:High  
Accuracy 8 Channel filling  
MODEL:ARE26108  
YEAR:2017

Parameter	
Product	Coating machine
Operating system	OMRON electronic control, stable and reliable, 7 inch touch LCD screen
Features	Adopt American FMI high-precision pump, no splash liquid, no bubble, each channel can be adjusted individually for different liquid and different volume
Filling method	Clean injection mode, safer and more convenient
Plate feeder	Stacker
Monitoring system	OMRON diffuse inverse detection, can identify various materials microplate, stable and reliable
Plate type	96 well plate
Memory	Current run records, historical run records
Material	High anti-corrosion 316 stainless steel, neat, wear-resistant, easy to clean
Pump filling volume	10-400ul (adjustable), interval 0.2ul
Filling precision	Tolerance $\pm 1\%$ , repeat precision $<0.5\%$
Capacity	100 plates/hour

**Cat. No. ARE502430**



EQUIPMENT MANE:  
High Accuracy 8 Channel filling  
MODEL:ARE26108  
YEAR:2017

Parameter		
Model	ARE 5000 Series	ARE5100 Series
Product	Coating machine	
Operating system	OMRON electronic control, stable and reliable, 7 inch touch LCD screen	
Features	Adopt American FMI high-precision pump, no splash liquid, no bubble, each channel can be adjusted individually for different liquid and different volume	
Filling method	Clean injection mode, safer and more convenient	
Memory	Current run records, historical run records	
Material	High anti-corrosion 316 stainless steel, neat, wear-resistant, easy to clean	
Plate type	24/30/32/48/96 well plate	
Pump filling volume	20-400ul (adjustable), interval 0.2ul	
Filling precision	Tolerance $\pm 2\%$ , repeat precision $<0.5\%$	
Plate feeding	Manual	automatic
Capacity	2,500 plates/hour	3,000 plates/hour

**Cat. No. ARE2208**



EQUIPMENT MANE:

8 Channel Filling

MODEL: ARE2208

YEAR: 2014



Parameter	
Product	Coating machine
Operating system	OMRON electronic control, stable and reliable, 7 inch touch LCD screen
Features	Adopt American FMI high-precision pump, no splash liquid, no bubble, each channel can be adjusted individually for different liquid and different volume
Filling method	Clean injection mode, safer and more convenient
Plate feeder	Manual
Monitoring system	OMRON diffuse inverse detection, can identify various materials microplate, stable and reliable
Plate type	96 well plate
Memory	Current run records, historical run records
Material	High anti-corrosion 316 stainless steel, neat, wear-resistant, easy to clean
Pump filling volume	50-400ul (adjustable), interval 1ul
Filling precision	Tolerance $\pm 2\%$
Filling strips	1 ~ 12 strips
Capacity	500 plates/hour

**Cat. No. ARE2296**



EQUIPMENT MANE:

96 Channel Filling

MODEL: ARE2296

YEAR: 2014



Parameter	
Product	Coating machine
Operating system	OMRON electronic control, stable and reliable, 7 inch touch LCD screen
Filling method	Clean injection mode, safer and more convenient
Plate feeder	Manual
Monitoring system	OMRON diffuse inverse detection, can identify various materials microplate, stable and reliable
Plate type	96 well plate
Memory	Current run records, historical run records
Material	High anti-corrosion 316 stainless steel, neat, wear-resistant, easy to clean
Pump filling volume	50-400ul (adjustable), interval 1ul
Filling precision	Tolerance $\pm 2\%$
Capacity	2500 plates/hour

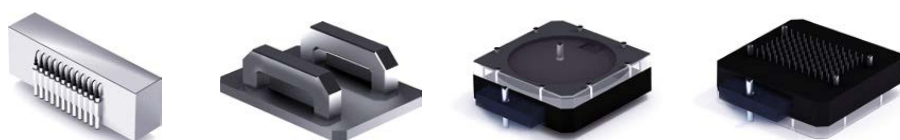
**Cat. No. ARE2396**



EQUIPMENT MANE: 96 Channel Automatic Filling

MODEL: ARE2396

YEAR: 2015



Parameter	
Product	Coating machine
Function	Coating, monitor, volume auto adjustable, alarm auto stop running
Operating system	OMRON electronic control, stable and reliable, 7 inch touch LCD screen
Filling method	Clean injection mode, safer and more convenient
Plate feeder	Stacker
Monitoring system	OMRON diffuse inverse detection, can identify various materials microplate, stable and reliable
Plate type	96 well plate
Memory	Current run records, historical run records
Material	High anti-corrosion 316 stainless steel, neat, wear-resistant, easy to clean
Pump filling volume	50-400ul (adjustable), interval 1ul
Filling precision	Tolerance $\pm 2\%$
Monitor interval	1 ~ 5,000 plates
Capacity	2,000 plates/hour

Cat. No. ARE2396L



EQUIPMENT NAME:  
L-Type 96 Channel  
Automatic Printing Filling  
MODEL: ARE2396L  
YEAR: 2017

Parameter	
Product	Coating machine
Function	Coating and printing
Operating system	OMRON electronic control, stable and reliable, 7 inch touch LCD screen
Filling method	Clean injection mode, safer and more convenient
Plate feeder	Stacker
Automatic washing	Yes, automatic clean & washing
Monitoring system	OMRON diffuse inverse detection, can identify various materials microplate, stable and reliable
Plate type	96 well plate
Memory	Current run records, historical run records
Material	High anti-corrosion 316 stainless steel, neat, wear-resistant, easy to clean
Pump filling volume	50-400ul (adjustable), interval 1ul
Filling precision	Tolerance $\pm 2\%$
Printe	Inkjet printer
Capacity	2000 plates/hour

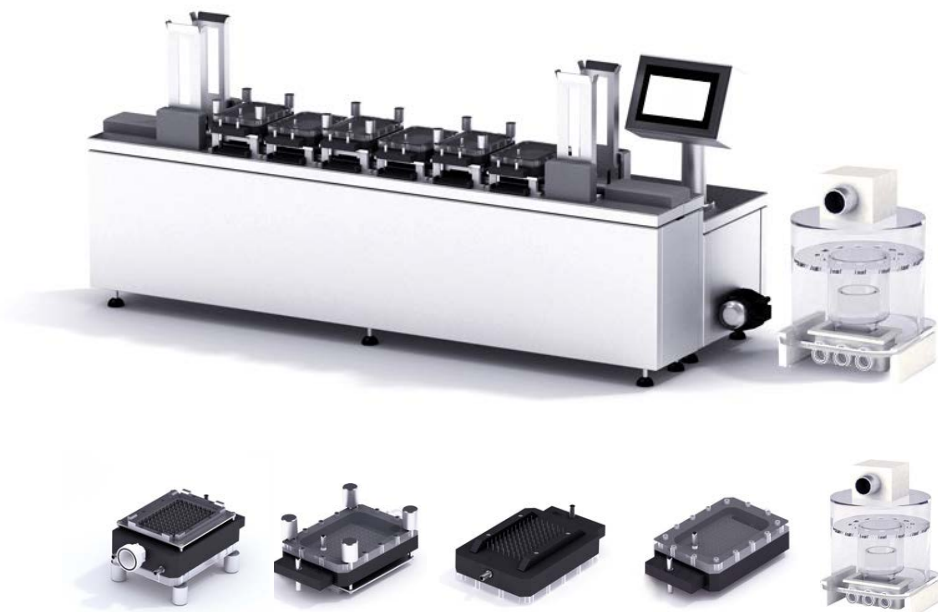
Cat. No. ARE1396



EQUIPMENT NAME:  
Integrated Design  
MODEL: ARE1396  
YEAR: 2014

Parameter	
Product	3 in 1 machine
Function	Coating and printing
Operating system	OMRON electronic control, stable and reliable, 7 inch touch LCD screen
Filling method	Clean injection mode, safer and more convenient
Plate feeder	Stacker
Protect bottom	Filling nozzle no need to touch bottom, protect the coating materials safety
Automatic discharge	Automatic discharge waste liquid
Automatic washing	Yes, automatic clean & washing
Monitoring system	OMRON diffuse inverse detection, can identify various materials microplate, stable and reliable
Leak proof	Yes
Assist	Washing intensity, liquid absorb time, soak
Plate type	96 well plate
Memory	Current run records, historical run records
Material	High anti-corrosion 316 stainless steel, neat, wear-resistant, easy to clean
Washing liquid volume	150~400ul, interval 1ul
Coating liquid volume	50~400ul, interval 1ul
Blocking liquid volume	50~400ul, interval 1ul
Residuals	<3ul/well
Filling precision	Tolerance $\pm 2\%$
Washing times	1~9 times
Absorb time	0.1 ~ 9.9s
Blocking capacity	1,200 plates/hour
Washing capacity	2,000 plates/hour

Cat. No. ARE1596



EQUIPMENT MANE:

Integrated Design

MODEL:ARE1596

YEAR:2014

Parameter	
Product	3 in 1 machine
Function	Washing, blocking, coating
Operating system	OMRON electronic control, stable and reliable, 7 inch touch LCD screen
Filling method	Clean injection mode, safer and more convenient
Plate feeder	Stacker
Protect bottom	Filling nozzle no need to touch bottom, protect the coating materials safety
Automatic discharge	Automatic discharge waste liquid
Automatic washing	Yes, automatic clean & washing
Monitoring system	OMRON diffuse inverse detection, can identify various materials microplate, stable and reliable
Leak proof	Yes
Assist	Washing intensity, liquid absorb time, soak
Plate type	96 well plate
Memory	Current run records, historical run records
Material	High anti-corrosion 316 stainless steel, neat, wear-resistant, easy to clean
Washing liquid volume	150~400ul, interval 5ul
Coating liquid volume	50~400ul, interval 5ul
Blocking liquid volume	50~400ul, interval 5ul
Residuals	<3ul/well
Filling precision	Tolerance $\pm 2\%$
Washing times	1~2 times
Absorb time	0.1 ~ 9.9s
Blocking capacity	2,000 plates/hour
Washing capacity	2,000 plates/hour

Cat. No. ARE3196



EQUIPMENT MANE:

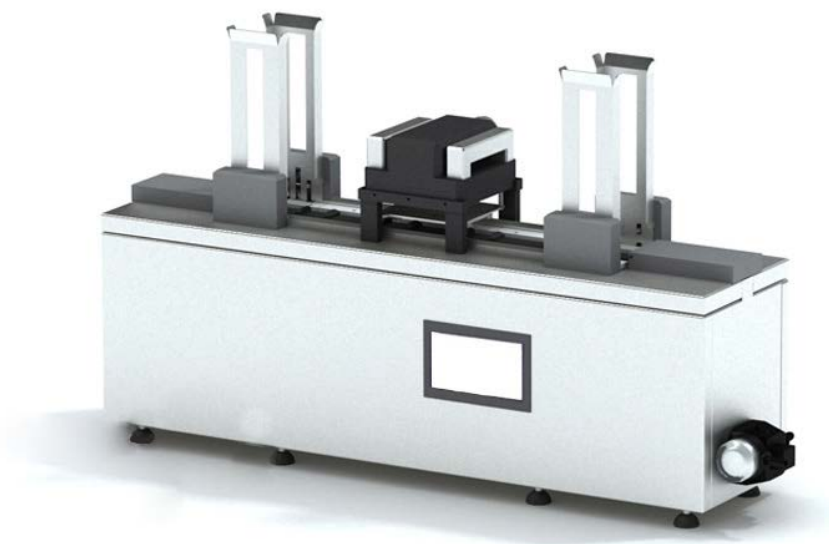
96 Channel Suction Fluid

MODEL:ARE3196

YEAR:2015

Parameter	
Product	Absorber machine
Operating system	OMRON electronic control, stable and reliable, 7 inch touch LCD screen
Protect bottom	Filling nozzle no need to touch bottom, protect the coating materials safety
Plate feeder	Manual
Automatic discharge	Automatic discharge waste liquid
Plate type	96 well plate
Material	High anti-corrosion 316 stainless steel, neat, wear-resistant, easy to clean
Residuals	<1ul/well
Capacity	1,200 plates/hour
Absorb times	1~9 times
Absorb time	0.1 ~ 9.9s

**Cat. No. ARE3296**



EQUIPMENT MANE:

96 Channel Suction Fluid

MODEL:ARE3296

YEAR:2015



Parameter	
Product	Absorber machine
Operating system	OMRON electronic control, stable and reliable, 7 inch touch LCD screen
Protect bottom	Filling nozzle no need to touch bottom, protect the coating materials safety
Plate feeder	Manual
Automatic discharge	Automatic discharge waste liquid
Plate type	96 well plate
Material	High anti-corrosion 316 stainless steel, neat, wear-resistant, easy to clean
Residuals	<1ul/well
Capacity	1,600 plates/hour
Absorb times	1~9 times
Absorb time	0.1 ~ 9.9s

**Cat. No. ARE2108A**



EQUIPMENT MANE:

High accuracy coating machine

MODEL:ARE2108A

YEAR:2022

Parameter	
Function	Coating, Washing, Filling
Operation system	7in touch screen
Features	FMI high accuracy pumps, 8 channels maximum fill 8 types reagents
Plates feeder	Stacker, total maximum 25 plates
Monitor	OMRON monitor system, identify various types plate
Plates	96 well plate (or 384 plate)
Records	Current and history records
Coating volume	10-400ul, interval 0.2ul
Accuracy	<0.5%
Speed	400 plates/hour

**8 channels, max 8 type reagents**

**Cat. No. ARE2108**



EQUIPMENT MANE:

8 Channel filling

MODEL:ARE2108

YEAR:2022



Parameter	
Function	Coating, Washing, Filling
Operation system	7in touch screen
Features	FMI high accuracy pumps, 8 channels maximum fill 8 types reagents
Plates feeder	Stacker, total maximum 25 plates
Monitor	OMRON monitor system, identify various types plate
Plates	96 well plate
Records	Current and history records
Coating volume	50-400ul, interval 1ul
Accuracy	<2%
Speed	400 plates/hour

Cat. No. ARE2196



Parameter	
Function	Coating
Operation system	7in touch screen
Features	FMI high accuracy pumps, 8 channels maximum fill 8 types reagents
Plates feeder	Stacker
Monitor	OMRON monitor system, identify various types plate
Plates	96 well plate
Records	Current and history records
Coating volume	50-400ul, interval 1ul
Accuracy	<0.2%
Speed	2000 plates/hour

EQUIPMENT MANE:

High Accuracy 96 Channel filling

MODEL:ARE2196

YEAR:2022